

**MEDIUM VOLTAGE  
INVERTER STATION,  
CUSTOMIZED  
UP TO 5.1 MVA****From 1660 to 5100 kVA**

This brand new medium voltage solution integrates all the devices required for a multi-mega-watt system.

**Maximize your investment  
with a minimal effort**

Ingeteam's Inverter Station is a compact, customizable and flexible solution that can be configured to suit each customer's requirements. It is supplied together with up to four photovoltaic inverters (two dual inverters). All the equipment is suitable for outdoor installation, so there is no need of any kind of housing.

**Higher adaptability and power density**

This PowerStation is now more versatile, as it presents the MV transformer integrated into a steel base frame together with the MV switchgear. Moreover, it features a great power density: 254 kW/m<sup>3</sup>.

**Plug & Play technology**

This MV solution integrates power conversion equipment –up to 5.1 MVA–, liquid-filled hermetically sealed transformer up to 34.5 kV and provision for low voltage equipment.

The MV Skid is delivered pre-assembled for a fast on-site connection with up to two dual PV inverters from Ingeteam's B Series central inverter family.

**Complete accessibility**

Thanks to the lack of housing, the inverters, the switchgear and the transformer can have immediate access. Furthermore, the design of the B Series central inverters has been conceived to facilitate maintenance and repair works.

**Maximum protection**

Ingeteam's B Series central inverters integrate the latest generation electronics and a much more efficient electronic protection. Apart from that, they feature the main electrical protections and they deploy grid support functionalities, such as low voltage ride-through capability, reactive power deliverance and active power injection control.

Furthermore, the electrical connection between the inverters and the transformer is fully protected from direct contact.



## Medium voltage dual inverter station, customized up to 5.1 MVA

### CONSTRUCTION

- Steel base frame.
- Suitable for slab or piers mounting.
- Compact design, minimizing freight costs.

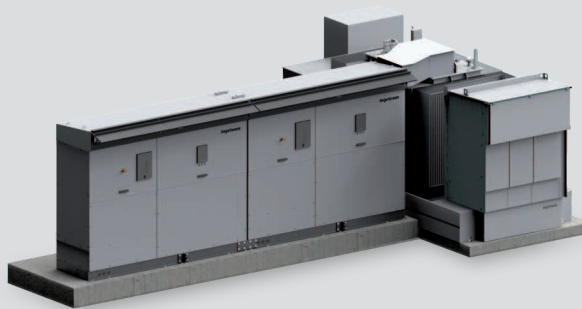
### STANDARD EQUIPMENT

- Up to four inverters with an output power of 5.1 MVA.
- Liquid-filled hermetically sealed transformer up to 34.5 kV.
- Oil-retention tank.
- Frame for installation of LV equipment.
- Minimum installation at project site.

### OPTIONS UPON REQUEST

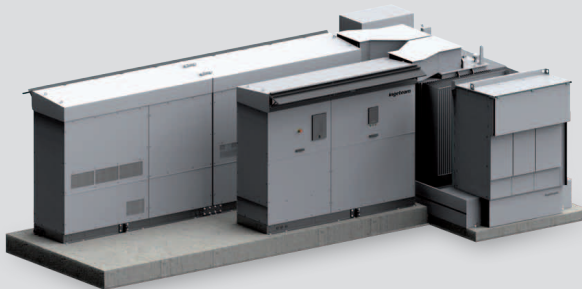
- Electrical gear as per customer necessities: low voltage distribution panels, auxiliary transformers, SCADA panels, and integration on metal frame.
- Metering equipment.
- Remote communications.
- Start-up at the system site.

### Three possible configurations



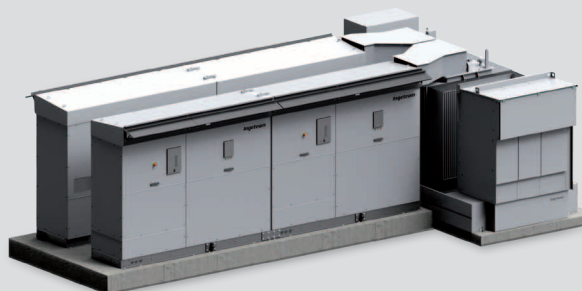
#### Dual Inverter Station

From 1,660 up to 2,550 kVA.



#### Single Inverter + Dual Inverter Station

From 2,490 up to 3,825 kVA.



#### Double Dual Inverter Station

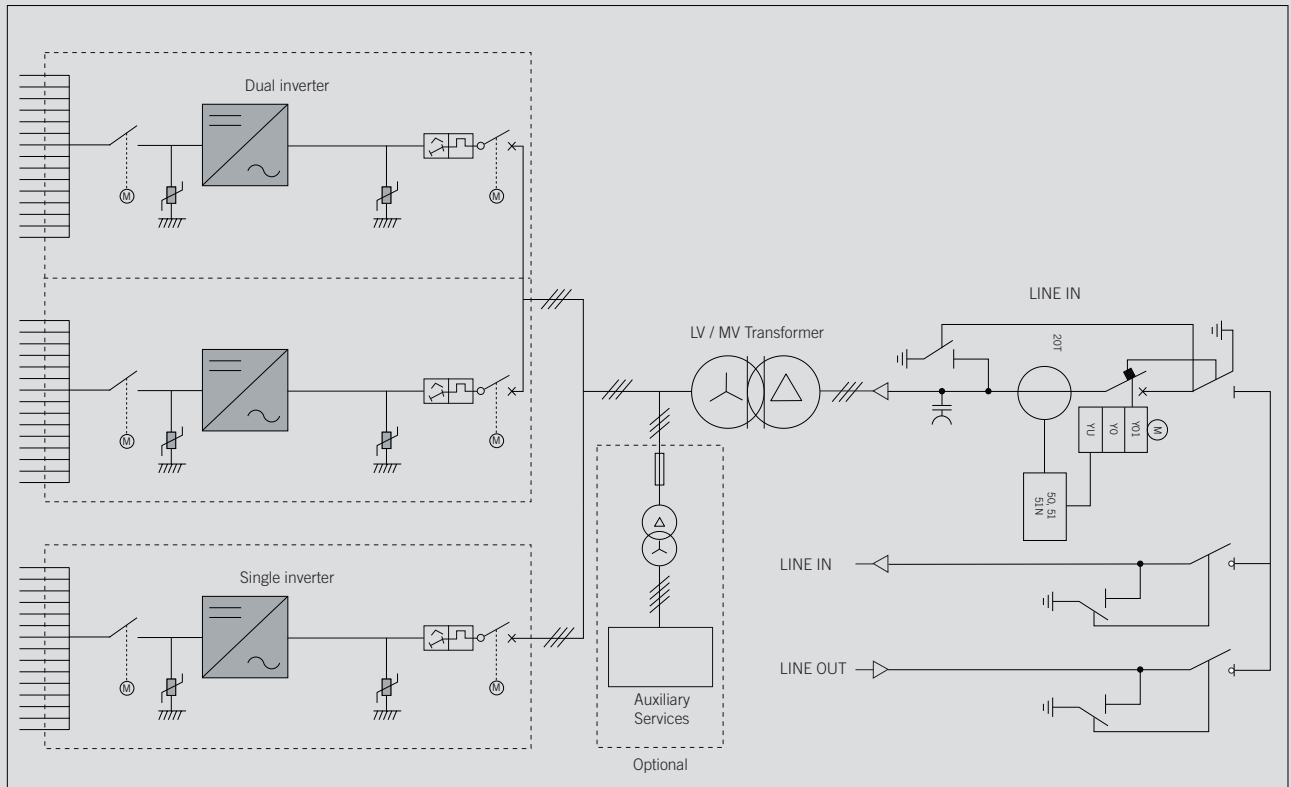
From 3,320 up to 5,100 kVA.

Medium voltage inverter station, customized up to 5.1 MVA

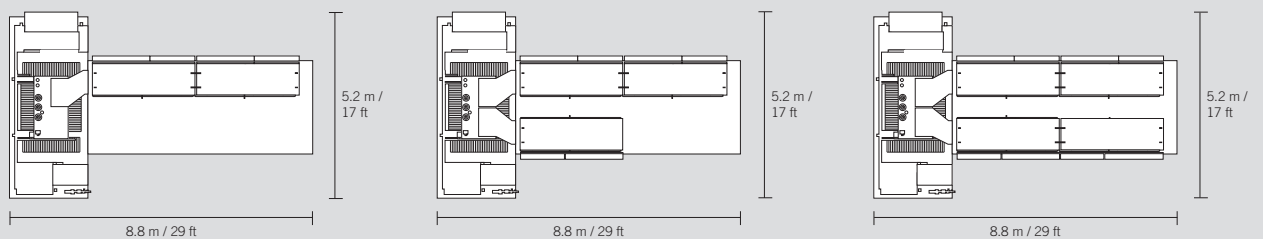
	MSK17 - Dual Inverter	MSK17 - Single + Dual Inverter	MSK17 - Double Dual Inverter
Number of inverters	2	3	4
Rated power @50 °C / 122 °F	2,346 kVA	3,519 kVA	4,692 kVA
Max. power @35 °C / 95 °F	2,550 kVA	3,825 kVA	5,100 kVA
Skid Size	5,200 x 2,100 mm / 17 x 7 ft	5,200 x 2,100 mm / 17 x 7 ft	5,200 x 2,100 mm / 17 x 7 ft
Max. estimated skid weight (without inverters)	12 tons	16 tons	21 tons
Voltage class	24 - 36 kV	24 - 36 kV	24 - 36 kV
Installation altitude <sup>(1)</sup>	Up to 4,500 m (14,765 ft)	Up to 4,500 m (14,765 ft)	Up to 4,500 m (14,765 ft)
Operating temperature range	-20 °C to +60 °C / -4 °F to +140 °F	-20 °C to +60 °C / -4 °F to +140 °F	-20 °C to +60 °C / -4 °F to +140 °F

Notes: <sup>(1)</sup> For installations beyond 1,000 m (3,280 ft), please contact Ingeteam's solar sales department.

Configuration with three B Series PV inverters



Footprint and layout





# Ingeteam

## **Ingeteam Power Technology, S.A.**

Avda. Ciudad de la Innovación, 13  
31621 SARRIGUREN (Navarra) - Spain  
Tel.: +34 948 288 000 / Fax: +34 948 288 001  
e-mail: solar.energy@ingeteam.com

## **Ingeteam S.r.l.**

Via Emilia Ponente, 232  
48014 CASTEL BOLOGNESE (RA) - Italy  
Tel.: +39 0546 651 490 / Fax: +39 054 665 5391  
e-mail: italia.energy@ingeteam.com

## **Ingeteam SAS**

La Naurouze B - 140 rue Carmin  
31670 Labège - France  
Tel: +33 (0)5 61 25 00 00 / Fax: +33 (0)5 61 25 00 11  
e-mail: france@ingeteam.com

## **Ingeteam INC.**

3550 W. Canal St.  
MILWAUKEE, WI 53208 - USA  
Tel.: +1 (414) 934 4100 / +1 (855) 821 7190 / Fax: +1 (414) 342 0736  
e-mail: solar.us@ingeteam.com

## **Ingeteam, a.s.**

Technologická 371/1  
70800 OSTRAVA - PUSTKOVEC  
Czech Republic  
Tel.: +420 59 732 6800 / Fax: +420 59 732 6899  
e-mail: czech@ingeteam.com

## **Ingeteam Shanghai, Co. Ltd.**

Shanghai Trade Square, 1105  
188 Si Ping Road  
200086 SHANGHAI - P.R. China  
Tel.. +86 21 65 07 76 36 / Fax: +86 21 65 07 76 38  
e-mail: shanghai@ingeteam.com

## **Ingeteam, S.A. de C.V.**

Ave. Revolución, nº 643, Local 9  
Colonia Jardín Español - MONTERREY  
64820 - NUEVO LEÓN - México  
Tel.: +52 81 8311 4858 / Fax: +52 81 8311 4859  
e-mail: northamerica@ingeteam.com

## **Ingeteam Ltda.**

Rua Estácio de Sá, 560  
Jd. Santa Genebra  
13080-010 Campinas/SP - Brazil  
Tel.: +55 19 3037 3773  
e-mail: brazil@ingeteam.com

## **Ingeteam Pty Ltd.**

Unit 2 Alphen Square South  
16th Road, Randjiespark  
Midrand 1682 - South Africa  
Tel.: +2711 314 3190 / Fax: +2711 314 2420  
e-mail: southafrica@ingeteam.com

## **Ingeteam SpA**

Los militares 5890, Torre A, oficina 401  
7560742 - Las Condes  
Santiago de Chile - Chile  
Tel.: +56 2 29574531  
e-mail: chile@ingeteam.com

## **Ingeteam Power Technology India Pvt. Ltd.**

2nd Floor, 431  
Udyog Vihar, Phase III  
122016 Gurgaon (Haryana) - India  
Tel.: +91 124 420 6491-5 / Fax: +91 124 420 6493  
e-mail: india@ingeteam.com

## **Ingeteam Sp. z o.o.**

Ul. Koszykowa 60/62 m 39  
00-673 Warszawa - Poland  
Tel.: +48 22 821 9930 / Fax: +48 22 821 9931  
e-mail: polska@ingeteam.com

## **Ingeteam Australia Pty Ltd.**

iAccelerate Centre, Building 239  
Innovation Campus, Squires Way  
North Wollongong, NSW 2500 - Australia  
Tel.: +61 499 988 022  
e-mail: australia@ingeteam.com

## **Ingeteam Panama S.A.**

Calle Manuel Espinosa Batista, Ed. Torre Internacional  
Business Center, Apto./Local 407 Urb.C45 Bella Vista  
Bella Vista - Panama  
Tel.: +50 761 329 467

## **Ingeteam Service S.R.L.**

Bucuresti, Sector 2, Bulevardul Dimitrie Pompeiu Nr 5-7  
Cladirea Hermes Business Campus 1, Birou 236, Etaj 2  
Romania  
Tel.: +40 728 993 202

## **Ingeteam Philippines Inc.**

Office 2, Unit 330, Milelong Bldg.  
Amorsolo corner Rufin St.  
1230 Makati  
Gran Manila - Philippines  
Tel.: +63 0917 677 6039