



## Voltage and current measurement for air or outdoor

Ingepac SR LPVT and Ingepac SR LPCT sensors offer an alternative solution to conventional instrument transformers in a reduced space and at a competitive cost, being a very complete solution for **medium voltage** environments.

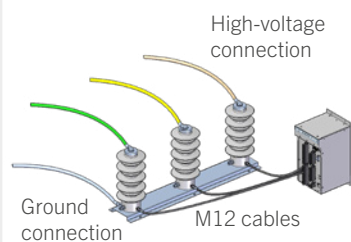
Ingepac SR sensors comply with the requirements defined in the **IEC 61869-10** and **IEC 61869-11** standards, thus guaranteeing a measurement accuracy of **0.2 S** for currents and **0.5 P** for voltages.

Ingepac SR sensors are subjected to the **same accuracy and surge tests** as conventional transformers, following **IEC 61869-1** and **IEC 61869-6** standards.

### Applications

- Air and pole-mounted switchgear
- Reclosers
- Sectionalizers

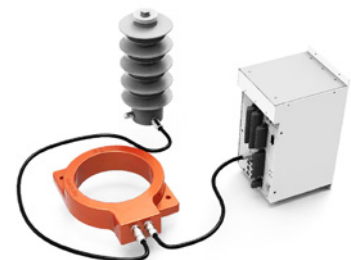
**Ingepac SR LPVT 24A**  
Voltage measurement





**Ingepac SR LPCT**  
Current measurement






**Combined solution**  
SR LPVT 24A + SR LPCT 150 500 A



## INGEPAC SR LPCT · CURRENT SENSORS

	APPLICATION	MEASURING RANGE / INSULATION LEVEL	TRANSFORMATION RATIO	CONNECTOR
	Interior	(500 A Kpcr 1.5) / (0.72 / 3 kV)	500 A / 225 mV	RJ45 hembra
	Exterior	(500 A Kpcr 1.5) / (0.72 / 3 kV)	500 A / 225 mV	M12 "A-coded" (8 polos)

## SENSORES DE INTENSIDAD · INGEPA SR LPVT

	APPLICATION	MEASURING RANGE / INSULATION LEVEL	TRANSFORMATION RATIO	CONNECTOR
	Interior	30 kV (36 / 70 / 170 kV) 11 kV ... 20 kV (24 / 50 / 125 kV)	30000 V / 3,25 V 20000 V / 3,25 V	RJ45 o M12 "A-coded" (8 polos)
	Exterior	11 kV ... 20 kV (24 / 50 / 125 kV)	20000 V / 3,25 V	M12 "A-coded" (8 polos)
	Interior / Exterior	30 kV (36 / 70 / 170 kV) 11 kV ... 20 kV (24 / 50 / 125 kV)	30000 V / 3,25 V 20000 V / 3,25 V	M12 "A-coded" (8 polos)

## Benefits

- Measurement and protection accuracy
- Small size and weight
- Good accuracy
- Very safe
- Extensive dynamic range
- Low cost
- Ease of installation
- More sustainable, with less amount of raw material needed

