



STORAGE SOLUTIONS
for commercial and industrial

Ingeteam



STORAGE SOLUTIONS

for commercial and industrial systems

- STORAGE OF SELF-PRODUCED SOLAR ENERGY USABLE WHEN NEEDED
- UNUSED ENERGY STORED IN THE BATTERY, AS A SUPPLY OF CLEAN ENERGY
- IMPLEMENTATION OF SELF-CONSUMPTION FAVORING NEW SYSTEMS SUCH AS ELECTRIC CAR CHARGING OR HEATING SYSTEMS, ALLOWING THE CUT OF YOUR BILL

INGECON SUN STORAGE 3Play



INGECON SUN STORAGE 100TL

Three-phase transformerless battery inverter with the maximum power density.

Three-phase battery inverters for commercial and industrial systems. These bidirectional storage inverters feature the same technology as ingeteam's string photovoltaic inverters.

Lower operational costs

Thanks to the wireless communication network that the INGECON® SUN STORAGE 100TL enables, the storage system could be commissioned, monitored and controlled without cables. Moreover, its string inverter philosophy allows for a fast and easy replacement that does not require qualified technicians.

Greater flexibility and power density

A greater flexibility is possible thanks to its maximum DC voltage (1,100 V) and to its wide input voltage range (627-850 V). Great power density, with 100 kW of power in only 80 kg.

Robust and long-lasting design

Aluminium casing, especially conceived for outdoor installations (IP65). The design of the INGECON® SUN STORAGE 3Play inverter family guarantees the maximum life expectancy and the best features, even with high temperatures.

Ethernet and Wi-Fi as standard

This battery inverter features Ethernet and Wi-Fi communications as standard. These communications, together with the webserver that the inverter integrates, allow for a faster and more reliable commissioning by using a mobile phone, tablet or laptop. Furthermore, it is compatible with an external Cloud Connect.

Standard 5 year warranty, extendable for up to 25 years

INGECON SUN STORAGE 100TL

MAIN FEATURES

- Low-voltage ride-through capability.
- Reactive power capability.
- Compatible with external Cloud Connect software.
- 98.8% maximum efficiency.
- Ethernet and Wi-Fi communications supplied as standard.
- Integrated Webserver.
- Software INGECON® SUN Monitor for PV plant monitoring.
- Suitable for indoor and outdoor installations (IP65).
- High temperature performance.
- 4 digital inputs and 2 digital outputs.

PROTECTIONS

- Shortcircuits and overloads at the output.
- Anti-islanding with automatic disconnection.
- Insulation faults.
- AC overvoltages with type 2 surge arresters.
- DC overvoltages with type 2 surge arresters.

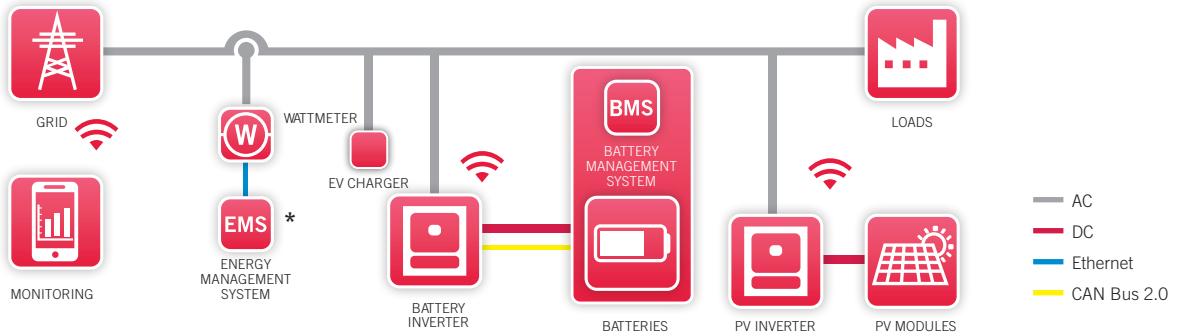
OPTIONAL ACCESSORIES

- Self-consumption kit.
- RS-485 communication.

BENEFITS

- Greater power density.
- Greater cost-effectiveness thanks to the cabling cost reduction.
- High availability compared to central inverters.
- High efficiency rates.
- Easy maintenance.

WIRING DIAGRAM

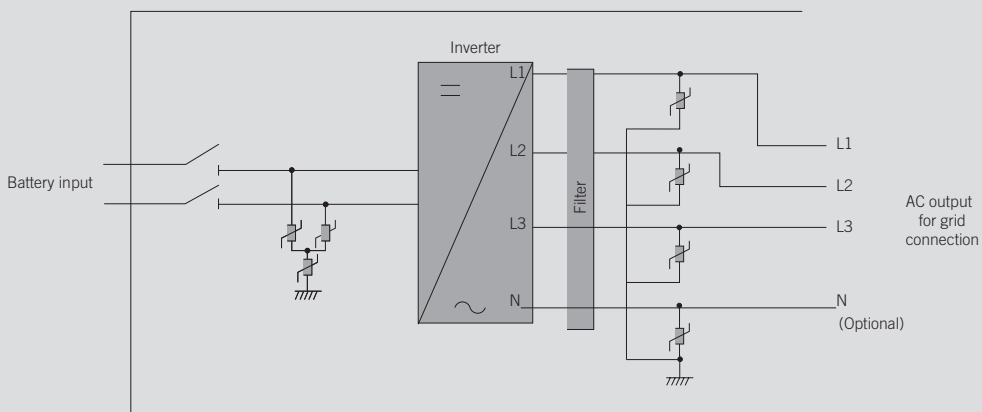


* EMS provided only for Ingeteam Inverters (PV and Storage)

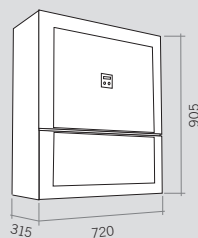
Integrated elements

Terminal blocks	✓
DC switch	✓
DC surge arresters, type 2	✓
AC surge arresters, type 2	✓

3Play TL



Size and weight (mm)

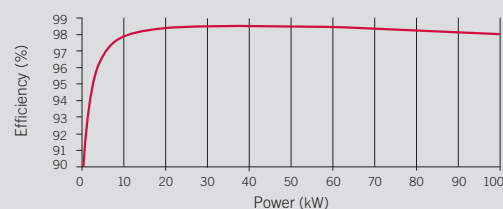


100TL
80 kg.

INGECON SUN STORAGE 100TL	
Input (DC)	
Voltage range ⁽¹⁾	627 - 850 V
Maximum voltage ⁽²⁾	1,100 V
Maximum power (charge/discharge)	60 kW / 100 kW
Maximum current (charge/discharge)	96 A / 159 A
Battery type	Li-ion, lead
Shortcircuit current	240 A
Communication with the BMS (Battery Management System)	CAN Bus 2.0 / Ethernet
Output (AC)	
Rated power	60 kW / 100 kW
Max. temperature at rated power ⁽³⁾	50 °C
Maximum current	87 A / 145 A
Rated voltage	400 V
Rated frequency	50 / 60 Hz
Power Factor	1
Adjustable power factor	Yes. 0 - 1 (leading / lagging)
THD	<3%
Efficiency	
Maximum efficiency	98.8%
Euroefficiency	98.1%
General Information	
Refrigeration system	Forced ventilation
Air flow	570 m ³ /h
Stand-by consumption	20 W
Consumption at night	1 W
Ambient temperature	-25 °C to 60 °C
Relative humidity (non-condensing)	0 - 100%
Protection class	IP65 / NEMA 4
RCD	1,000 mA
Max. operating altitude ⁽⁴⁾	3,000 m
Connection	AC: Max. Cross section: 240 mm ² (one wire) DC connection: Max. Cross section: 300 mm ² (one wire) Copper and Aluminium cabling permitted for DC and AC
Marking	CE
EMC and safety standards	EN 61000-6-1, EN 61000-6-2, EN 61000-6-4, EN 61000-3-11, EN 61000-3-12, EN 62109-1, EN 62109-2, EN 50178, IEC 62116, IEC 61683, EN 50530, IEC 60068-2-1, IEC 60068-2-2, IEC 60068-2-14, IEC 60068-2-30, IEC 60068-2-68
Grid connection standards	IEC 61727, EN 50549-1, EN 50549-2, UNE 206007-1 IN, NTS 2.1 SEPE, NTS 1.1 SENP, CEI 0-21, CEI 0-16, Arrete 9 du Juin, ABNT NBR 16149, ABNT NBR 16150, NDU-015, Portaria 73

Notes: ⁽¹⁾ V_{min batt} is for rated conditions (V_{ac}=1.1 p.u. and Power Factor=1). V_{min batt} will depend on the grid voltage (V_{ac}), according to this relation: V_{min batt}=1,1*1.425*V_{ac}. ⁽²⁾ The inverter does not start operating until V_{dc} < 1,000 V. ⁽³⁾ For each °C of increase, the output power will be reduced at the rate of 2.3%. ⁽⁴⁾ Beyond 1,000 m, the maximum temperature at rated power will decrease at the rate of 5.5 °C per every additional 1,000 m.

Efficiency INGECON® SUN STORAGE 100TL V_{dc} = 627 V





ISSB 110 HV is the most advanced Lithium Module for Commercial and Industrial Energy Storage systems.

Each application has its own Lithium Chemistry cell in order to guarantee the highest durability and Safety.



INGECON® SUN STORAGE BATTERY Features

- FAST CONNECTIONS
- WALL MOUNTED, FLOOR MOUNTED, STACKABLE IN RACK IP56 AND PARALLEL APPLICATIONS
- HIGH CAPACITY THANKS TO ITS SCALABILITY AND SIMPLE CONFIGURATION.
- WIRELESS MONITORING FOR REAL TIME INTERVENTION AND MAINTENANCE.



ISSB 110 HV

A State-of-the-Art Technology.

They have been conceived with a series of features designed to satisfy very stringent and wide Market needs, the ones that today expert Customers are calling for.

We have thought to our Battery bank being as “modular”, that is the Customer is free to start from a very simple solution, 13 or 14 battery modules stacked (in two towers side by side, together with the HV Box, to form the rack) and up to 6 Racks coupled to one Inverter, up to a multi-block “clustered” system so from multiple of 100kW up to multiple MW system equivalent.

Like that, the vast majority of C&I needs is discovered even after the Installation gets done, being our Architecture conceived as an open one.

The IP entry level 21 is suited for classical indoor applications in commercial premises.

The battery bank is built out of a light metal housing to reduce the local weight impact and the layout takes into account the “stacked-like” modularity, that is the battery bank is stackable, making it easy and fast to increase the number of mod-

ules afterwards, from 13 (67,6 kWh) to 14 (74,2 kWh) and up to 6 battery stacks in parallel (445,2 kWh) for each 100kW single Inverter.

Main communication protocols are RS485, CAN, 232, Wifi and the expected cycle life is well beyond 7000. All above has been considered to offer the best flexibility and operative approach, without forgetting that things can get improved from time to time, depending on the Customer’s needs and interests.

ISSB 110 HV



INGECON® SUN STORAGE BATTERY 110 HV

	Single Module Hv
Basic Parameters	ISSB 110 HV
Battery System Capacity*	5,3 kWh
Single Module Nominal Voltage	51,2 Vdc
Application	HV
Modules Expandibility	HV Mode: from 13 to 14 Modules in Series with Single HV Box = One HV Cluster
Cluster Net Capacity	Max 84 Modules per HV System
Voltage Range	45,5-58,4 Vdc
Net Capacity	105 Ah
Usable Capacity	100 Ah
Dimension	580 x 463 x 155 mm
Weight	57,3 Kg
Charge / Discharge Current	100 A (150 A 30 s)
Peak	200 (Peak 5 s)
Depth of Discharge	100%
Communication Port	RS485, CAN, 232, Wi-Fi
Single string quantity	13-14 pcs
Discharge Temperature**	-20 ~ 60°C
Charge Temperature**	-10 ~ 55°C
Shelf Temperature**	-10 ~ 45°C
Humidity	5% ~ 95%
Altitude	< 3000 m
Design life	10 ↑ Years (25°c)
Expected Life Cycles @ STC	> 7000 ↑ (25°c)
Standards	IEC62619/UL1973 CE/UN38.3
Features	Pre-Charge + Fuse LV + Fuse HV + Auto Contactor + Dual BMS + Multi BMS FW management
	Applicable for High Voltage systems, Four protection levels for HV Box, Real time balancing, Adaptive charge/discharge CAN logic, Three step adaptive charging logic, 2xDI/DO programmable ports, Mobile app for monitoring, control, debugging, firmware update and historical information.

* Module net usable energy is managed by the BMS control logic to 100Ah

** See Warranty Terms and the Standard Test Conditions "STC" and the operative temperature

INGECON SUN STORAGE Battery



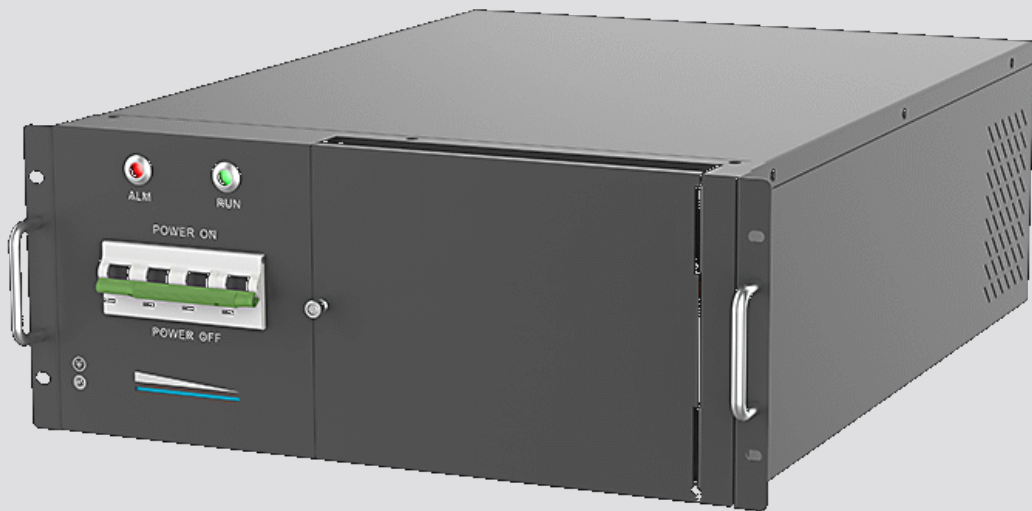
+



HV BOX***	INGECON® SUN STORAGE BATTERY 110 HV*	
Battery Module	6+7	7+7
Battery System Capacity	67,6 kWh	72,8 kWh
Min Voltage (SOC 0%)	617,5V	665V
Recommended Voltage	min 650V max 754V	min 700V max 812V
Dimensions	580x463x990 mm X 1 580x463x1155 mm X 1	580x463x1155 mm X 2
Weight	744,9 kg	802,2 kg
Depth of Discharge	100%	
Charge/Discharge	100A/100A	
Communication	RS485, CAN, 232, Wifi	
Protection Class	IP21	
Working Temperature (Discharge**/Charge)	-20°C +60°C / -10°C +55°C	
Storage Temperature**	0°C + 40°C self discharge 1%/month; -15°C +55°C self discharge 2%/month	
Humidity	5% ~ 95%	
Altitude	< 3000 m	
Design life	10 ↑ Years (25°C)	
Expected Life Cycles @ STC	> 7000 ↑ (25°C/80%DoD >75% residual)	
Standards	IEC62619/UL1973/CE/UN38.3	

* Module net usable energy is managed by the BMS control logic set to 100Ah
 ** See Warranty Terms and the Standard Test Conditions "STC" and the operative temperature
 *** HV BOX is compulsory

INGECON SUNSTORAGE Battery



ISSB 110 HV RACK

A State-of-the-Art Technology.

They have been conceived with a series of features designed to satisfy very stringent and wide Market needs, the ones that today expert Customers are calling for.

We have thought to our Battery bank being as “modular”, that is the Customer is free to start from a very simple solution, 13 or 14 battery modules in series (install in the IP54 cabinet, together with the HV Box, to form the rack) and up to 6 Racks coupled to one Inverter, up to a multi-block “clustered” system so from multiple of 100kW up to multiple MW system equivalent.

Like that, the vast majority of C&I needs is discovered even after the Installation gets done, being our Architecture conceived as an open one.

The IP entry level 56 is suited for classical outdoor applications in commercial premises.

The battery bank is built out of a light metal housing to reduce the local weight impact and the layout takes into account the “stacked-like” modularity, that is the battery bank is stackable, making it easy and fast to increase the number of mod-

ules afterwards, from 13 (67,6 kWh) to 14 (74,2 kWh) and up to 6 battery stacks in parallel (445,2 kWh) for each 100kW single Inverter.

Main communication protocols are RS485, CAN, 232, Wifi and the expected cycle life is well beyond 7000. All above has been considered to offer the best flexibility and operative approach, without forgetting that things can get improved from time to time, depending on the Customer’s needs and interests.

ISSB 110 HV RACK



INGECON® SUN STORAGE BATTERY 110 HV RACK

	Single Module Hv
Basic Parameters	ISSB 110 HV RACK
Battery System Capacity*	5,3 kWh
Single Module Nominal Voltage	51,2 Vdc
Application	HV
Modules Expandibility	HV Mode: from 13 to 14 Modules in Series with Single HV Box = One HV Cluster
Cluster Net Capacity	Max 84 Modules per HV System
Voltage Range	45,5-58,4 Vdc
Net Capacity	105 Ah
Usable Capacity	100 Ah
Dimension	550 x 430 x 155 mm
Weight	57,3 Kg
Charge / Discharge Current	100 A (150 A 30 s / 10 s)
Peak	150 A
Depth of Discharge	100%
Communication Port	RS485, CAN, 232, Wi-Fi
Single string quantity	13-14 pcs
Discharge Temperature**	-20 ~ 55°C
Charge Temperature**	-10 ~ 55°C
Shelf Temperature**	-10 ~ 45°C
Humidity	5% ~ 95%
Altitude	< 3000 m
Design life	10 ↑ Years (25°c)
Expected Life Cycles @ STC	> 7000 ↑ (25°c)
Standards	IEC62619/UL1973 CE/UN38.3
Features	Pre-Charge + Fuse LV + Fuse HV + Auto Contactor + Dual BMS + Multi BMS FW management
	Applicable for High Voltage systems, Four protection levels for HV Box, Real time balancing, Adaptive charge/discharge CAN logic, Three step adaptive charging logic, 2xDI/DO programmable ports, Mobile app for monitoring, control, debugging, firmware update and historical information.

* Module net usable energy is managed by the BMS control logic to 100Ah

** See Warranty Terms and the Standard Test Conditions "STC" and the operative temperature

INGECON SUNSTORAGE Battery

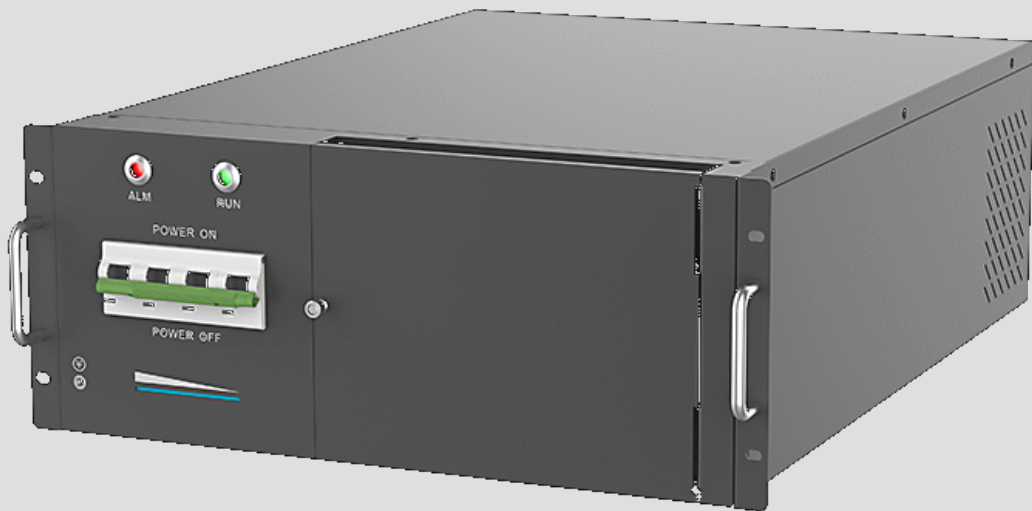


INGECON® SUN STORAGE BATTERY 110 HV RACK*

Battery Module	13	14
Battery System Capacity	67,6 kWh	72,8 kWh
Min Voltage (SOC 0%)	617,5V	665V
Recommended Voltage	min 650V max 754V	min 700V max 812V
Dimensions	approx. 1200x2000x600 mm	
Weight	approx. 1.150 kg	approx 1.210 kg
Depth of Discharge	100%	
Charge/Discharge	100A/100A	
Consumption	Max idle consumption 65 W / Max heat pump consumption 2500 W - 230 Vac 1ph	
Communication	RS485, CAN, 232, Wifi	
Protection Class	IP54	
Working Temperature (Discharge/Charge)	-15°C +60°C	
Storage Temperature**	0°C + 40°C self discharge 1%/month; -15°C +55°C self discharge 2%/month	
Humidity	5% ~ 95%	
Altitude	< 3000 m	
Design life	10 ↑ Years (25°C)	
Expected Life Cycles @ STC	> 7000 ↑ (25°C/80%DoD >75% residual capacity)	
Standards	IEC62619/CE/UN38.3	

* Module net usable energy is managed by the BMS control logic set to 100Ah
 ** See Warranty Terms and the Standard Test Conditions "STC" and the operative temperature

INGECON SUNSTORAGE Battery



ISSB 150 HV RACK

A State-of-the-Art Technology.

They have been conceived with a series of features designed to satisfy very stringent and wide Market needs, the ones that today expert Customers are calling for.

We have thought to our Battery bank being as “modular”, that is the Customer is free to start from a very simple solution, 13 or 14 battery modules in series (install in the IP54 cabinet, together with the HV Box, to form the rack) and up to 6 Racks coupled to one Inverter, up to a multi-block “clustered” system so from multiple of 100kW up to multiple MW system equivalent.

Like that, the vast majority of C&I needs is discovered even after the Installation gets done, being our Architecture conceived as an open one.

The IP entry level 54 is suited for classical outdoor applications in commercial premises.

The battery bank is built out of a light metal housing to reduce the local weight impact and the layout takes into account the “stacked-like” modularity, that is the battery bank is stackable, making it easy and fast to increase the number of mod-

ules afterwards, from 13 (100,1 kWh) to 14 (107,8 kWh) and up to 6 battery stacks in parallel (646,8 kWh) for each 100kW single Inverter.

Main communication protocols are RS485, CAN, 232, Wifi and the expected cycle life is well beyond 7000. All above has been considered to offer the best flexibility and operative approach, without forgetting that things can get improved from time to time, depending on the Customer’s needs and interests.

ISSB 150 HV RACK



INGECON® SUN STORAGE BATTERY 150 HV RACK

	Single Module Hv
Basic Parameters	ISSB 150 HV RACK
Battery System Capacity*	7,7 kWh
Single Module Nominal Voltage	51,2 Vdc
Application	HV
Modules Expandibility	HV Mode: from 13 to 14 Modules in Series with Single HV Box = One HV Cluster
Cluster Net Capacity	Max 84 Modules per HV System
Voltage Range	47,5-58,4 Vdc
Net Capacity	150 Ah
Usable Capacity	150 Ah
Dimension	680 x 450 x 190 mm
Weight	80 Kg
Charge / Discharge Current	75 A - peak 150 A
Depth of Discharge	100%
Communication Port	RS485, CAN, 232, Wi-Fi
Single string quantity	13-14 pcs
Discharge Temperature**	-20 ~ 55°C
Charge Temperature**	-10 ~ 55°C
Shelf Temperature**	-10 ~ 45°C
Humidity	5% ~ 95%
Altitude	< 3000 m
Design life	10 ↑ Years (25°C)
Expected Life Cycles @ STC	≥ 7000 ↑ (0.5C, 90%DOD, 70%SOH, 25°C)
Standards	IEC62619/UL1973 CE/UN38.3
Features	Pre-Charge + Fuse LV + Fuse HV + Auto Contactor + Dual BMS + Multi BMS FW management
	Applicable for High Voltage systems, Four protection levels for HV Box, Real time balancing, Adaptive charge/discharge CAN logic, Three step adaptive charging logic, 2xDI/DO programmable ports, Mobile app for monitoring, control, debugging, firmware update and historical information.

*Module net usable energy is managed by the BMS control logic to 150Ah

** See Warranty Terms and the Standard Test Conditions "STC" and the operative temperature

INGECON SUNSTORAGE Battery

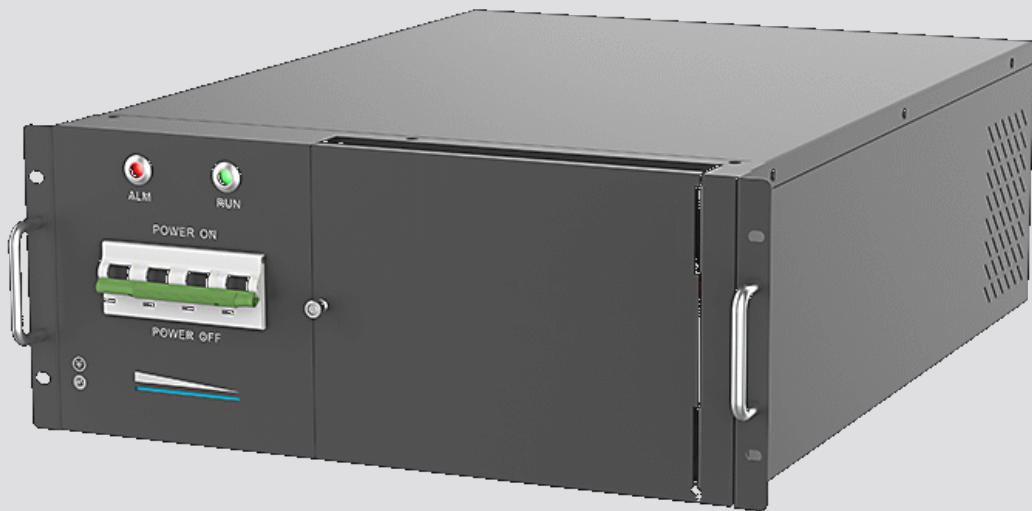


INGECON® SUN STORAGE BATTERY 150 HV RACK*

Battery Module	13	14
Battery System Capacity	100,1 kWh	107,8 kWh
Min Voltage (SOC 0%)	617,5V	665V
Recommended Voltage	min 650V max 754V	min 700V max 812V
Dimensions (W*D*H)	approx 1140x1190x2300 mm	
Weight	approx. 1.500 kg	approx. 1.580 kg
Depth of Discharge	100%	
Charge/Discharge	150 A , reccomended 75 A	
Consumption	Max idle consumption 65 W / Max heat pump consumption 2500 W - 230 Vac 1ph	
Communication	RS485, CAN, 232, Wifi	
Protection Class	IP54	
Operative ambiente Temperature (Discharge/Charge)	-15°C +60°C	
Storage Temperature**	0°C + 40°C self discharge 1%/month; -15°C +55°C self discharge 2%/month	
Humidity	5% ~ 95%	
Altitude	< 3000 m	
Design life	10 ↑ Years (25°C)	
Expected Life Cycles @ STC	≥4700 (1C, 90%DOD, 70%SOH, 25°C) / ≥7000 (0.5C, 90%DOD, 70%SOH, 25°C)	
Standards	IEC62619/CE/UN38.3	

*Module net u sable energy is managed by the BMS control logic set to 150Ah
 ** See Warranty Terms and the Standard Test Conditions "STC" and the operative temperature

INGECON SUNSTORAGE Battery



ISSB 200 HV RACK

A State-of-the-Art Technology.

They have been conceived with a series of features designed to satisfy very stringent and wide Market needs, the ones that today expert Customers are calling for.

We have thought to our Battery bank being as “modular”, that is the Customer is free to start from a very simple solution, 13 or 14 battery modules in series (install in the IP54 cabinet, together with the HV Box, to form the rack) and up to 6 Racks coupled to one Inverter, up to a multi-block “clustered” system so from multiple of 100kW up to multiple MW system equivalent.

Like that, the vast majority of C&I needs is discovered even after the Installation gets done, being our Architecture conceived as an open one.

The IP entry level 54 is suited for classical outdoor applications in commercial premises.

The battery bank is built out of a light metal housing to reduce the local weight impact and the layout takes into account the “stacked-like” modularity, that is the battery bank is stackable, making it easy and fast to increase the number of mod-

ules afterwards, from 13 (132,6 kWh) to 14 (142,8 kWh) and up to 6 battery stacks in parallel (856,8 kWh) for each 100kW single Inverter.

Main communication protocols are RS485, CAN, 232, Wifi and the expected cycle life is well beyond 5000. All above has been considered to offer the best flexibility and operative approach, without forgetting that things can get improved from time to time, depending on the Customer’s needs and interests.

ISSB 200 HV RACK



INGECON® SUN STORAGE BATTERY 200 HV RACK

	Single Module Hv
Basic Parameters	ISSB 200 HV RACK
Battery System Capacity*	10,2 kWh
Single Module Nominal Voltage	51,2 Vdc
Application	HV
Modules Expandibility	HV Mode: from 13 to 14 Modules in Series with Single HV Box = One HV Cluster
Cluster Net Capacity	Max 84 Modules per HV System
Voltage Range	47,5-58,4 Vdc
Net Capacity	200 Ah
Usable Capacity	200 Ah
Dimension	680 x 450 x 190 mm
Weight	89 Kg
Charge / Discharge Current	200 A
Depth of Discharge	100%
Communication Port	RS485, CAN, 232, Wi-Fi
Single string quantity	13-14 pcs
Discharge Temperature**	-20 ~ 55°C
Charge Temperature**	-10 ~ 55°C
Shelf Temperature**	-10 ~ 45°C
Humidity	5% ~ 95%
Altitude	< 3000 m
Design life	10 ↑ Years (25°C)
Expected Life Cycles @ STC	≥ 5000 ↑ (1C, 90%DOD, 70%SOH, 25°C)
Standards	IEC62619/UL1973 CE/UN38.3
Features	Pre-Charge + Fuse LV + Fuse HV + Auto Contactor + Dual BMS + Multi BMS FW management
	Applicable for High Voltage systems, Four protection levels for HV Box, Real time balancing, Adaptive charge/discharge CAN logic, Three step adaptive charging logic, 2xDI/DO programmable ports, Mobile app for monitoring, control, debugging, firmware update and historical information.

*Module net usable energy is managed by the BMS control logic to 200Ah

** See Warranty Terms and the Standard Test Conditions "STC" and the operative temperature

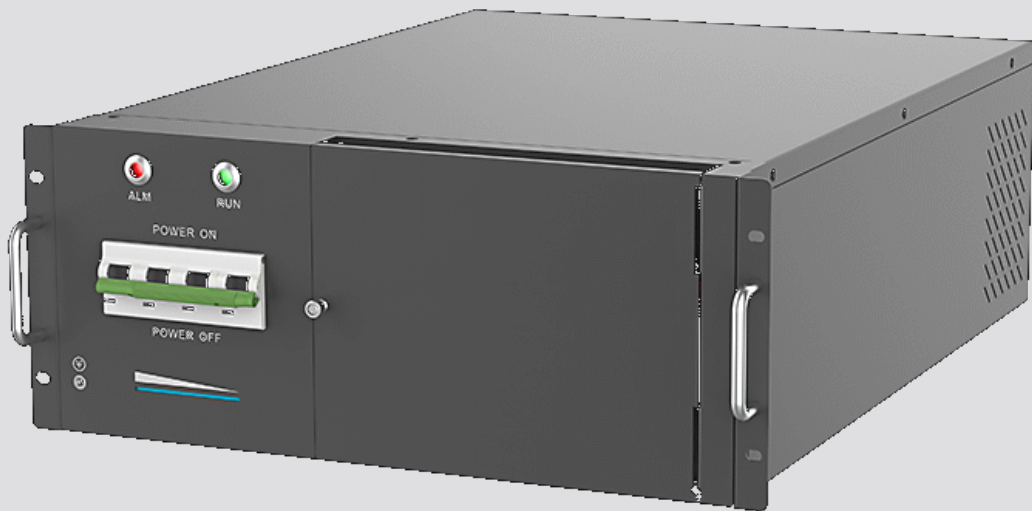
INGECON SUNSTORAGE Battery



INGECON® SUN STORAGE BATTERY 200 HV RACK*		
Battery Module	13	14
Battery System Capacity	132,6 kWh	142,8 kWh
Min Voltage (SOC 0%)	617,5V	665V
Recommended Voltage	min 650V max 754V	min 700V max 812V
Dimensions (W*D*H)	approx 1330x990x2260 mm	
Weight	approx. 1.600 kg	approx. 1.690 kg
Depth of Discharge	100%	
Charge/Discharge	200 A	
Consumption	Max idle consumption 65 W / Max heat pump consumption 2500 W - 230 Vac 1ph	
Communication	RS485, CAN, 232, Wifi	
Protection Class	IP54	
Operative ambiente Temperature (Discharge/Charge)	-15°C +60°C	
Storage Temperature**	0°C + 40°C self discharge 1%/month; -15°C +55°C self discharge 2%/month	
Humidity	5% ~ 95%	
Altitude	< 3000 m	
Design life	10 ↑ Years (25°C)	
Expected Life Cycles @ STC	≥ 5000 ↑ (1C, 90%DOD, 70%SOH, 25°C)	
Standards	IEC62619/CE/UN38.3	

*Module net usable energy is managed by the BMS control logic set to 200Ah
 ** See Warranty Terms and the Standard Test Conditions "STC" and the operative temperature

INGECON SUNSTORAGE Battery



ISSB 280 HV RACK

A State-of-the-Art Technology.

They have been conceived with a series of features designed to satisfy very stringent and wide Market needs, the ones that today expert Customers are calling for.

We have thought to our Battery bank being as “modular”, that is the Customer is free to start from a very simple solution, 13 or 14 battery modules in series (install in the IP54 cabinet, together with the HV Box, to form the rack) and up to 6 Racks coupled to one Inverter, up to a multi-block “clustered” system so from multiple of 100kW up to multiple MW system equivalent.

Like that, the vast majority of C&I needs is discovered even after the Installation gets done, being our Architecture conceived as an open one.

The IP entry level 54 is suited for classical outdoor applications in commercial premises.

The battery bank is built out of a light metal housing to reduce the local weight impact and the layout takes into account the “stacked-like” modularity, that is the battery bank is stackable, making it easy and fast to increase the number of mod-

ules afterwards, from 13 (185,9 kWh) to 14 (200,2 kWh) and up to 6 battery stacks in parallel (1201,2 kWh) for each 100kW single Inverter.

Main communication protocols are RS485, CAN, 232, Wifi and the expected cycle life is well beyond 8000. All above has been considered to offer the best flexibility and operative approach, without forgetting that things can get improved from time to time, depending on the Customer’s needs and interests.

ISSB 280 HV RACK



INGECON® SUN STORAGE BATTERY 280 HV RACK

	Single Module Hv
Basic Parameters	ISSB 280 HV RACK
Battery System Capacity*	14,3 kWh
Single Module Nominal Voltage	51,2 Vdc
Application	HV
Modules Expandibility	HV Mode: from 13 to 14 Modules in Series with Single HV Box = One HV Cluster
Cluster Net Capacity	Max 84 Modules per HV System
Voltage Range	47,5-58,4 Vdc
Net Capacity	280 Ah
Usable Capacity	280 Ah
Dimension	860 x 482 x 230 mm
Weight	116 Kg
Charge / Discharge Current	140A / 280 A peak
Depth of Discharge	100%
Communication Port	RS485, CAN, 232, Wi-Fi
Single string quantity	13-14 pcs
Discharge Temperature**	-20 ~ 55°C
Charge Temperature**	-10 ~ 55°C
Shelf Temperature**	-10 ~ 45°C
Humidity	5% ~ 95%
Altitude	< 3000 m
Design life	10 ↑ Years (25°C)
Expected Life Cycles @ STC	≥ 8000 ↑ (0.5C, 90%DOD, 70%SOH, 25°C)
Standards	IEC62619/UL1973 CE/UN38.3
Features	Pre-Charge + Fuse LV + Fuse HV + Auto Contactor + Dual BMS + Multi BMS FW management
	Applicable for High Voltage systems, Four protection levels for HV Box, Real time balancing, Adaptive charge/discharge CAN logic, Three step adaptive charging logic, 2xDI/DO programmable ports, Mobile app for monitoring, control, debugging, firmware update and historical information.

*Module net usable energy is managed by the BMS control logic to 280Ah

** See Warranty Terms and the Standard Test Conditions "STC" and the operative temperature

INGECON SUN STORAGE Battery

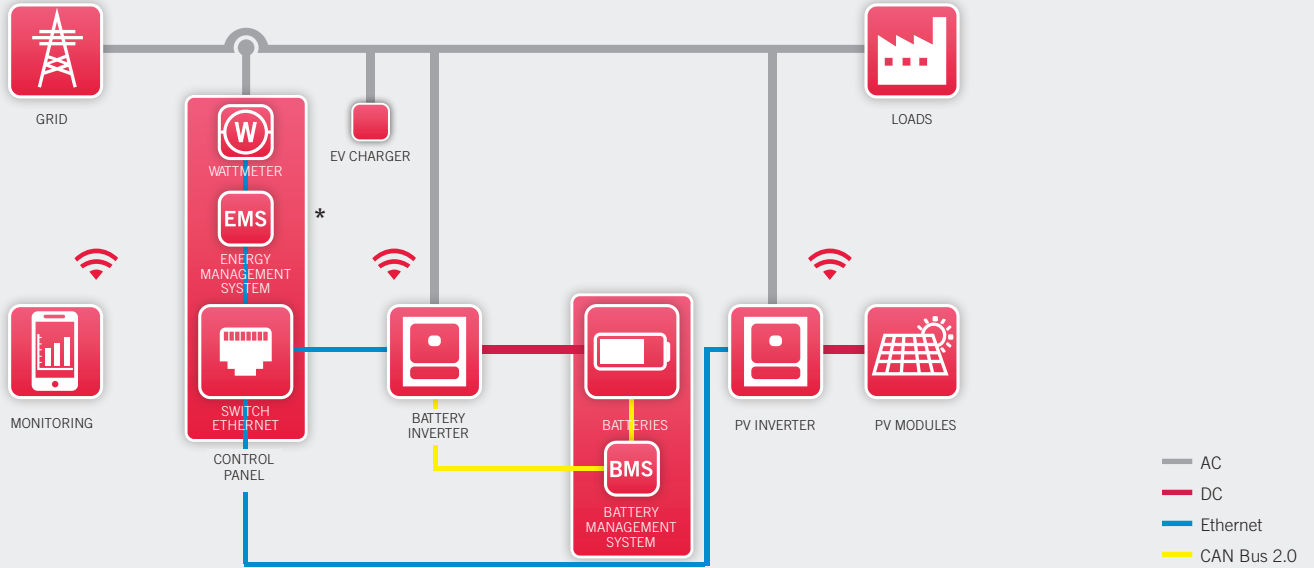


INGECON® SUN STORAGE BATTERY 280 HV RACK*		
Battery Module	13	14
Battery System Capacity	185,9 kWh	200,2 kWh
Min Voltage (SOC 0%)	617,5V	665V
Recommended Voltage	min 650V max 754V	700V max 812Vm
Dimensions (W*D*H)	approx 1140x1380x2300 mm	
Weight	approx. 2.180 kg	approx. 2.290 kg
Depth of Discharge	100%	
Charge/Discharge	140A / 280 A peak	
Consumption	Max idle consumption 65 W / Max heat pump consumption 2500 W - 230 Vac 1ph	
Communication	RS485, CAN, 232, Wifi	
Protection Class	IP54	
Operative ambient Temperature (Discharge/Charge)	-15°C +60°C	
Storage Temperature**	0°C + 40°C self discharge 1%/month; -15°C +55°C self discharge 2%/month	
Humidity	5% ~ 95%	
Altitude	< 3000 m	
Design life	10 ↑ Years (25°C)	
Expected Life Cycles @ STC	≥ 8000 ↑ (0.5C, 90%DOD, 70%SOH, 25°C)	
Standards	IEC62619/CE/UN38.3	

*Module net usable energy is managed by the BMS control logic set to 280Ah
 ** See Warranty Terms and the Standard Test Conditions "STC" and the operative temperature

SET-UP OPTIONS

Option 1: 1 inverter storage with 1 battery rack of 13 or 14 modules in total



* EMS provided only for Ingeteam Inverters (PV and Storage)

Scope of supply

- ISS 100TL
- ISS Battery 110 HV + BMS
- PV Inverters (any Ingeteam model)
- INGECON® SUN MONITORING

Description:

The system developed by Ingeteam for the industrial and commercial market comprises, in addition to the INGECON® SUN 3 PLAY inverters for photovoltaic applications, the INGECON® SUN STORAGE 3 Play, a three-phase inverter specifically designed for storage, characterised by a high power density (100 kW of power in just 80 kg).

Operating costs are reduced thanks to the wireless communication network that enables commissioning and monitoring of batteries without the need for a cable network, but with an alternative wired Ethernet connection.

Commissioning is fast and reliable, thanks to the app from which all important information can be viewed, allowing any errors to be quickly identified, and also allowing considerable savings in routine and extraordinary maintenance.

Its robust and durable design, with an aluminium casing, is also designed for outdoor installation (IP65).

The second component of this system is the INGECON® SUN STORAGE BATTERY 110 HV, which can be installed on walls, floors and stacked.

Configuration is simple and expandable, and wireless monitoring allows for real-time intervention and maintenance.

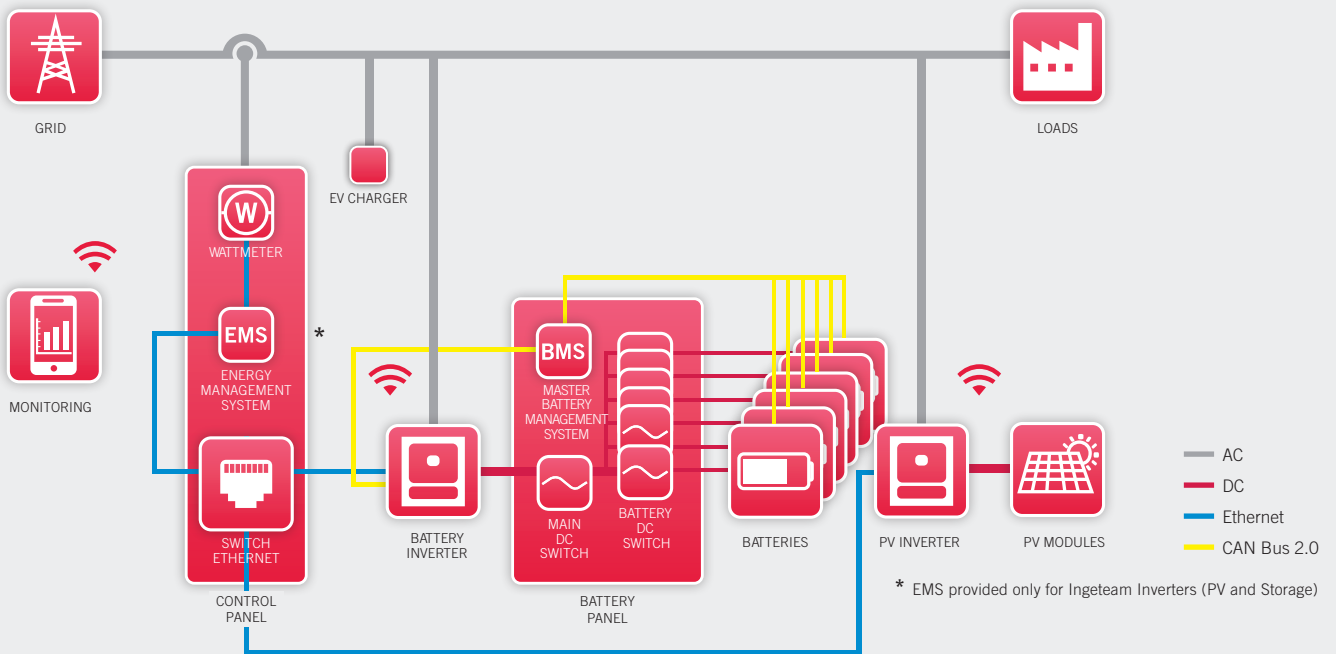
The batteries consist of lithium cells for maximum durability and safety.

The battery pack includes the BMS that communicates with the inverter via the CAN Bus protocol and consists of 13 to 14 modules divided into 1 rack that allows up to 72.8 kWh of energy.

Each battery module is constructed of metal law-ro to reduce weight impact and the layout provides modularity, i.e. the battery bank is stackable, which makes it easy and quick to increase capacity later.

The batteries are designed for more than 7,000 cycles, ensuring an optimal return on investment.

Option 2: 1 inverter storage plus battery racks of 13 or 14 modules



Scope of supply

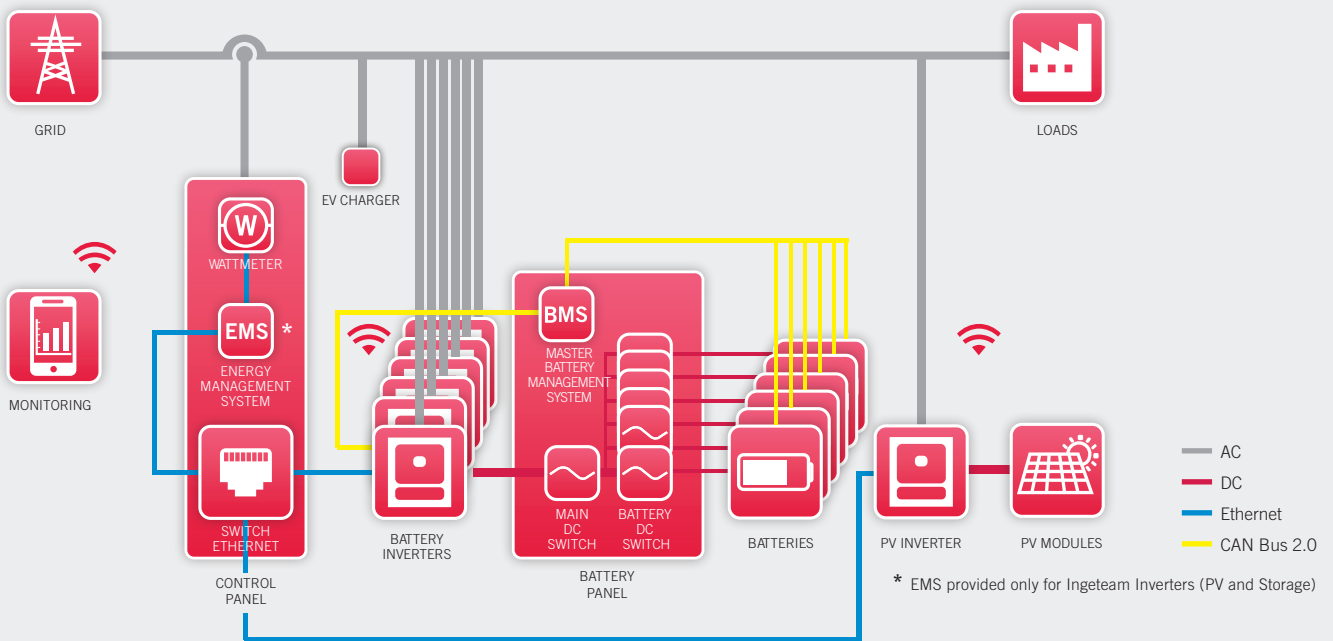
- ISS 100 TL
- ISS Battery 110 HV
- PV Inverters (any Ingeteam model)
- Battery Panel + BMS
- INGECON® SUN MONITORING

Description:

Compared to option 1, this configuration provides use of multiple battery racks (up to 6) coupled to the same inverter, reaching a maximum capacity of 436,8 kWh. A battery parallel panel is also provided to manage the connection/disconnection of the batteries through dedicated switches.

SET-UP OPTIONS

Option 3: several inverters storage each combined with their own 13 or 14 module battery racks



Scope of supply

- ISS 100TL
- ISS Battery 110 HV
- PV Inverters (any Ingeteam model)
- Battery Panel + BMS
- INGECON® SUN MONITORING (app)

Description:

Compared to the previous option, this configuration allows the management of several storage inverters and consequently the battery groups associated with them. In addition to the battery parallel panel to manage the connection/disconnection of the batteries, a EMS is used to supervise the control and monitoring of the entire system.

INGECON SUN Ems Control Panel

Includes wattmeter and switch ethernet.

The control panel designed by Ingeteam includes, in addition to a sophisticated EMS, a wattmeter with a high accuracy class and an Ethernet switch that allows a secure and reliable connection with all the elements of the network.

Provided only for Ingeteam Inverters (PV and Storage).



EMS for 100TL Inverters

The most efficient energy management solution for selfconsumption systems with 100TL INVERTERS.

This energy management system developed by Ingeteam is directed at optimizing energy consumption in commercial and industrial PV systems equipped with 100TL solar inverters. The EMS is designed to increase the amount of energy generated from renewable sources, to match on-site consumption requirements.

The smart energy manager

The INGECON® SUN EMS Control Panel uses readings from a wattmeter at the point of connection to manage the system energy flows, by sending operating set-points to the various inverters.

Advanced connectivity

The energy manager can be connected to the devices and equipment forming part of the system either through its Ethernet or WiFi interface (built-in as standard) and can be monitored with the INGECON® SUN EMS Control Panel Tools software. This software is also used to configure the control strategy. Additionally, this device features an RS-485 port for communication with the external wattmeter.

Maximum control of the energy consumed The system energy manager constantly controls the amount of energy exchanged with the public grid.

This information is transferred in real time from the wattmeter and is available for viewing through the INGECON® SUN EMS Control Panel Tools software.

Designed to operate in a whole range of systems

Many different types of systems can be controlled by an INGECON® SUN EMS Control Panel:

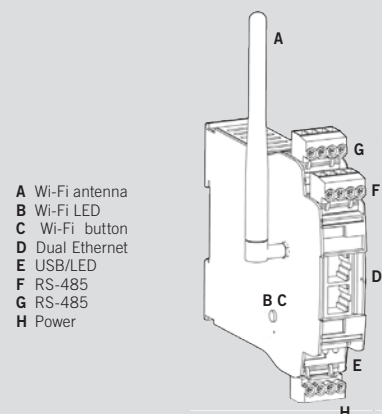
- Self-consumption with PV generation.
- PV-diesel hybrid systems.
- Public grid-PV-diesel hybrid systems.
- Monitoring.

Standard 3 year warranty



	EMS
Power supply ⁽¹⁾	Power
consumption	15 W
Voltage supply	7 - 42 Vdc
Connectivity	
Wi-Fi	✓
Ethernet	2
RS-485	2
USB for firmware updates	✓
Advanced EMS strategies	✓
Compatible with IS Manager	✓
Compatible with IS EMS Tools	✓
Communication interface with other equipment	
Ingeteam inverters	Ethernet, Wi-Fi
Monitoring systems	Ethernet, Wi-Fi, 3G ⁽²⁾
Wattmeter	RS-485

Notes: (1) Not supplied by Ingeteam (2) An external 3G modem can be connected using the Ethernet or Wi-Fi connection on the IS EMS device.



INGECON SUN PPC Control Panel

Includes wattmeter and switch ethernet.

The control panel designed by Ingeteam includes, in addition to a sophisticated PPC (Power Plant Controller), a wattmeter with a high accuracy class and an Ethernet switch that allows a secure and reliable connection with all the elements of the network.

Provided only for Ingeteam Inverters (PV and Storage).



BESS Control System

An advanced algorithm combined with a fast and efficient communications system.

The INGECON® SUN PPC Control Panel helps the grid operator to manage the BESS performance and to guarantee the quality and stability of the electricity supply.

Maximum BESS control

An advanced algorithm combined with a fast and efficient communications system, with response times of less than one second, allows for a precise control of the active and reactive power delivered by the plant to the grid.

The INGECON® SUN PPC Control Panel controls the BESS inverters, ensuring compliance with the grid operator's re-

quirements at the BESS connection point. It is also possible to manage energy storage systems and other devices such as diesel generators, through the use of INGECON® SUN STORAGE Power inverters. This is a flexible system that can easily be adapted to the needs and configurations of each particular plant, whilst complying with the country-specific standards and regulations.

Continuous communication with all the devices

The Power Plant Controller dynamically receives the grid operator's setpoints. For this purpose, a number of communi-

cation protocols are incorporated such as Modbus TCP / RTU, DNP3, IEC 60870-5-101, IEC 60870-5104 and OPC UA. Likewise, it is also possible to add digital and analogue I/O modules in order to extend the communication capabilities with third-party devices.

Furthermore, the INGECON® SUN PPC Control Panel permits communication with the plant SCADA to transmit the connection point data. It is also possible a manual control for temporary maintenance or engineering operations.

Parallel DC Battery Panel

Includes Master BMS and switch disconnectors

When a storage capacity greater than that provided by a single rack of 13 or 14 modules is required, it is necessary to install the Parallel DC Battery Panel which includes the DC switches to parallel up to six battery racks with a single inverter and the Master BMS.



INGECON SUN Monitor



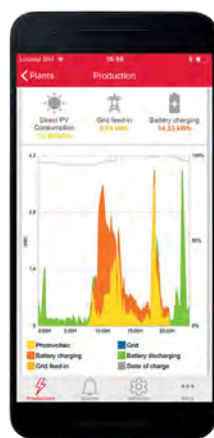
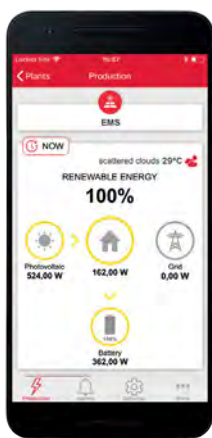
Web portal and Smartphone application to monitor solar power plants and self-consumption systems

The INGECON® SUN Monitor application enables accessing all the data of any solar PV plant or self-consumption installation from a PC, a tablet or a Smartphone (www.ingeconsunmonitor.com).

Its userfriendly configuration allows system owners, installers and developers to control the installation.

Maximum control of the system status
 With this software we can get real-time information about the solar system's status and production levels. This information is gathered and represented through graphics and lists, and it is also possible to generate an automated email report with production and alarms information. The data collection and storage is done during all the inverter's lifetime.

Also available as Smartphone app
 Thanks to the Smartphone app, every solar plant owner or self-consumption system user, with or without batteries, can access all the generation, consumption, and batteries charging/discharging data on a daily, weekly, monthly or yearly basis. Moreover, the application can also calculate the savings achieved on the electric bill.



INGEREV FUSION



FUSION

The charging station for public and private installations.

The **FUSION** range is available in two models, **FUSION Street** for ground mounting and **FUSION Wall** for wall mounting.

This dual equipment range has been designed to cover all electric vehicle charging demands in public and private settings alike.

Its standard features include Ethernet and WIFI communications, as well as the latest generation advanced functions such as Dynamic Load Management 2.0 (DLM 2.0) and OCPP protocols.

FEATURES

- Floor and wall mountable models, suitable for outdoor installation.
- Single phase and three phase models, with up to 32 amps per charging socket.
- Multiple charging sockets available, Mode 1 + 2 sockets, cables and Mode 3 sockets
- MID wattmeter.
- RGB LED status indicators.
- Multi-language colour screen.
- RFID reader.
- Ethernet and WIFI.
- DLM 2.0.
- Compatibility with OCPP.
- Updates through USB.
- Thermal-Magnetic Differential circuit breakers.
- Front door for ease of operation and maintenance.
- Ethernet switch to minimize the cost of Ethernet cabling.
- Warning message in the event of an outage.
- Possible customization with vinyl decals on all four faces⁽¹⁾.
- General breaker for the rapid disconnection of the charger.
- Security lock with key.
- Door-opening sensor.
- Automatic software updates (OCPP, ISO15118,...) for the entire product life.

Notes: ⁽¹⁾ Large surface for vinyl decals.



Notes: All data is subject to change without prior notice; always ask Ingeteam for the most recent datasheet and manual before purchasing. No part of this document can be copied or reproduced without written permission of Ingeteam.

Ingeteam

Ingeteam Power Technology, S.A.
Avda. Ciudad de la Innovación, 13
31621 Sarriguren (Navarra) - Spain
Tel.: +34 948 288 000
Fax: +34 948 288 001
e-mail: solar.energy@ingeteam.com

Ingeteam S.r.l.
Via Emilia Ponente, 232
48014 Castel Bolognese (RA) - Italy
Tel.: +39 0546 651 490
Fax: +39 054 665 5391
e-mail: italia.energy@ingeteam.com

Ingeteam SAS
La Naurouze B - 140 rue Carmin
31670 Labège - France
Tel.: +33 (0)5 61 25 00 00
Fax: +33 (0)5 61 25 00 11
e-mail: france@ingeteam.com

Ingeteam INC.
3550 W. Canal St.
Milwaukee, WI 53208 - USA
Tel.: +1 (414) 934 4100 / +1 (855) 821 7190
Fax: +1 (414) 342 0736
e-mail: solar.us@ingeteam.com

Ingeteam, a.s.
Technologická 371/1
70800 Ostrava - Pustkovec
Czech Republic
Tel.: +420 59 747 6800
Fax: +420 59 732 6899
e-mail: czech@ingeteam.com

Ingeteam Shanghai, Co. Ltd.
Shanghai Trade Square, 1105
188 Si Ping Road
200086 Shanghai - P.R. China
Tel.: +86 21 65 07 76 36
Fax: +86 21 65 07 76 38
e-mail: shanghai@ingeteam.com

Ingeteam, S.A. de C.V.
Leibnitz Ext 13 Int 1102, Colonia Anzures
11590 - Miguel Hidalgo
Ciudad de México - Mexico
Tel.: +52 81 8311 4858
Fax: +52 81 8311 4859
e-mail: northamerica@ingeteam.com

Ingeteam Ltda.
Rua Estácio de Sá, 560
Jd. Santa Genebra
13080-010 Campinas/SP - Brazil
Tel.: +55 19 3037 3773
e-mail: brazil@ingeteam.com

Ingeteam Pty Ltd.
Unit 2 Alphen Square South
16th Road, Randjiespark
Midrand 1682 - South Africa
Tel.: +2711 314 3190
Fax: +2711 314 2420
e-mail: southafrica@ingeteam.com

Ingeteam SpA
Los militares 5890, Torre A, oficina 401
7560742 - Las Condes
Santiago de Chile - Chile
Tel.: +56 2 29574531
e-mail: chile@ingeteam.com

Ingeteam Power Technology India Pvt. Ltd.
2nd Floor, 431
Udyog Vihar, Phase III
122016 Gurgaon (Haryana) - India
Tel.: +91 124 420 6491-5
Fax: +91 124 420 6493
e-mail: india@ingeteam.com

Ingeteam Sp. z o.o.
Ul. Koszykowa 60/62 m 39
00-673 Warszawa - Poland
Tel.: +48 22 821 9930
Fax: +48 22 821 9931
e-mail: polska@ingeteam.com

Ingeteam Australia Pty Ltd.
iAccelerate Centre, Building 239
Innovation Campus, Squires Way
North Wollongong, NSW 2500 - Australia
Tel.: +61 429 111 190
e-mail: australia@ingeteam.com

Ingeteam Panama S.A.
Av. Manuel Espinosa Batista,
Ed. Torre Internacional
Business Center, Apto./Local 407
Urb.C45 Bella Vista
Bella Vista - Panama
Tel.: +50 761 329 467

Ingeteam Service S.R.L.
Bucuresti, Sector 2,
Bulevardul Dimitrie Pompeiu Nr 5-7
Cladirea Hermes Business
Campus 1, Birou 236, Etaj 2
Romania
Tel.: +40 728 993 202

Ingeteam Philippines Inc.
Office 2, Unit 330, Milelong Bldg.
Amorsolo St. corner Rufino St.
1230 Makati
Gran Manila - Philippines
Tel.: +63 0917 677 6039

Ingeteam Power Technology, S.A.
Level 1, Al Bateen Tower C6 Bainunah
ADIB Building, Street 34
PO BOX 30010 - Abu Dhabi
United Arab Emirates
Tel.: +971 50 125 8244

Ingeteam Vietnam Ltd.
Spaces - 28A Tran Hung Dao Street
Phan Chu Trinh Ward
Hoan Kiem District
Ha Noi City - Vietnam
Tel.: +84 24 71014057
e-mail: vietnam@ingeteam.com

Ingeteam Uruguay, S.A.
Avenida 18 de Julio, 1474, Piso 12
11200, Montevideo - Uruguay
Tel.: +598 934 92064