



Voltage and current measurement for air or outdoor

INGEPAC™ LP VT and INGEPACTM LP CT sensors offer an alternative solution to conventional instrument transformers in a reduced space and at a more competitive cost, being a very complete solution for **medium voltage** environments.

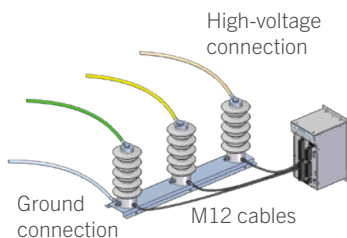
INGEPAC™ LP sensors comply with the requirements defined in the **IEC 61869-10** and **IEC 61869-11** standards, thus guaranteeing a measurement accuracy of **0.2 S** for currents and **0.5 P** for voltages.

Applications

- Air and pole-mounted switchgear
- Reclosers
- Sectionalizers

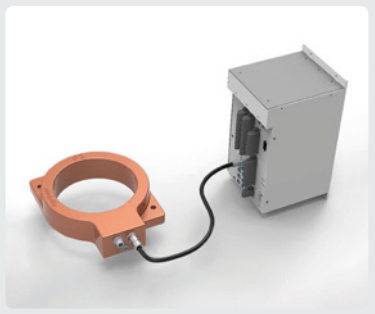
INGEPAC™ LP VT 24A

Voltage measurement



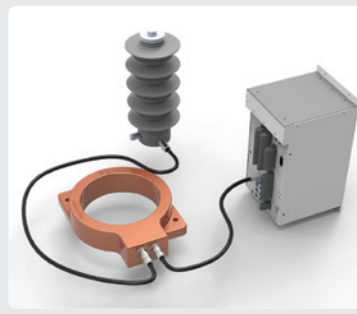
INGEPAC™ LP CT

Current measurement



Combined solution

LP VT 24A + LP CT 150 500 A



INGEPAC™ LP VT 24A

INGEPAC™ LP CT 150

FEATURES

Primary	11 kV / 13,2 kV / 15 kV / 20 kV	500 A
Transformation ratio	20000/ $\sqrt{3}$: 3,25/ $\sqrt{3}$	500 A / 225 mV
Accuracy	Class 0.5 P	Class 0.2 S / SP20
Module accuracy	0.5	0.2
Argument accuracy	20'	10'
Application	Air or outdoor	
Frequency	50/60 Hz	
Burden	<3 W	NA
Temperature	-25 °C up to 60 °C	-25 °C up to 40 °C
Protection grade	IP65	
Length	248 ± 1 mm	195 (external diameter)
Weight	1,480 ± 30 g	2,145 g
Material	Silicone	Epoxy

Benefits

- Measurement and protection accuracy
- Smaller size and weight
- Good accuracy
- Very safe
- Extensive dynamic range
- Lower cost
- Ease of installation
- More sustainable (less amount of raw material needed)

