

# CASE

# STUDY

155m SCV - Keppel Singmarine  
Rolls Royce



Subsea Construction Vessel

The 155m SCV (Subsea Construction Vessel) is designed to work in 2.5m (8.2 ft) significant wave height (Hs), and will be equipped with a dynamic positioning system. With a 31600kW Electrical power, it will be deployed for use at BP's Shah Deniz gas field development in the Azerbaijan sector of the Caspian Sea.

## Applications:

### Diesel/Gas generators for Power Generation:

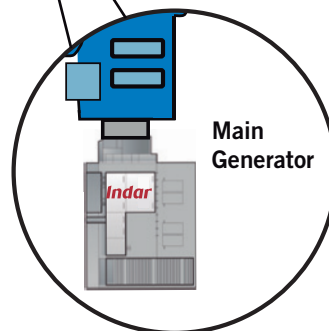
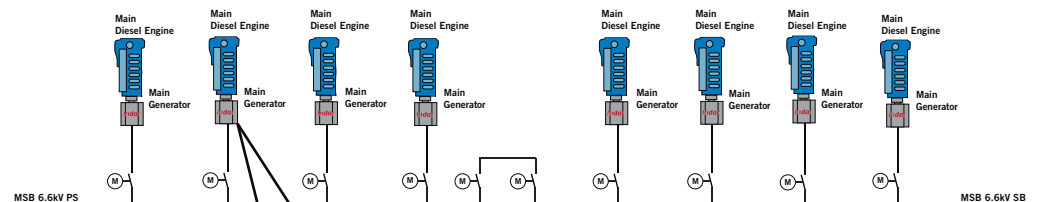
- Powerships
- CHP Plants
- Combined Cycle
- Distributed Energy
- Biomass

### Diesel/Gas generators for Marine Application:

- Main Generator
- Auxiliary Generator
- Shaft Generator
- Variable speed
- PTI/PTO/PTH

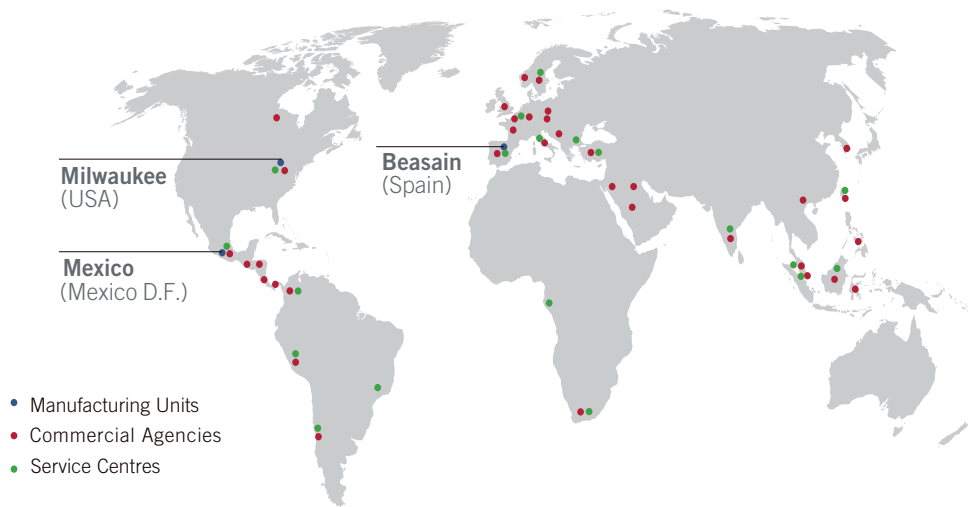
**6 x GBMS1210 Synchronous Generators each coupled to engine ROLLS-ROYCE 40 L9A 2**  
Output: 4,941 kVA | Voltage: 6,600 V | Speed: 720 rpm | IP: 54 | IC: 81W

**2 x GBMS1210 Synchronous Generators each coupled to engine ROLLS-ROYCE 40 L8A 2**  
Output: rated 3,941 kVA | Voltage: 6,600 V | Speed: 720 rpm | IP: 54 | IC: 81W



# **Indar**

An **Ingeteam** brand



## Your driving force