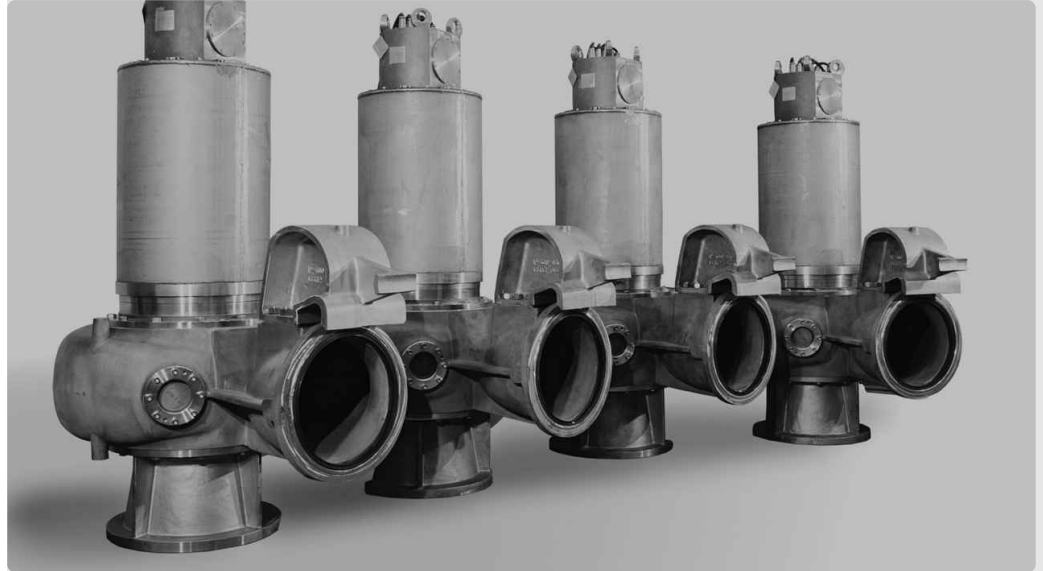


INDAR**SP BF**Pumps and motors
submersible**Applications:**

Drinking water supply for industrial processes, irrigation installations, booster units or pumping from tanks. Collection of water from the sea, rivers, lakes and underground water. Fire prevention installations.



The INDAR SP **BF** series consists of submersible pumps and motors designed for applications as sewage, drainage, storm water or solid containing liquids, in a wide range of product ranges. The INDAR **BF** pump is a mono cellular design with a multi-channel impeller design. The INDAR submersible electric motor is directly coupled to the pump. They are designed to operate in harsh conditions for municipalities and industrial applications or also for salt water intake systems. All parts of the pump and the motor are designed and manufactured by INDAR in Spain.

An efficient cooling system of the motor ensures the unit to work continuously even under severe environmental conditions, regardless of whether the pump is submerged or not. The impellers are designed to guarantee a wide and free passage of the pumping fluids and prevent clogging. Depending of the application and the quality of the pumping liquid, the impeller can be either a closed or open type impeller with one, two or more channels. The wide installation options, along with a wide range of construction materials, makes INDAR **BF** series a highly-versatile product that provides perfect solutions to an infinite range of applications.

Features

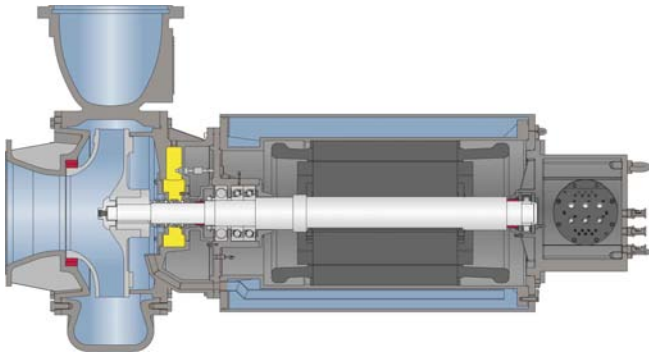
Flow
TDH
Power
Voltage
Speed
Materials
Type of installation

Ranges

700 m³/h-8600 m³/h (3000 GPM-37900 GPM)
3 mWC-60 mWC (10 FT-200 FT)
50 kW-2000 kW (67 HP-2680 HP)
220V-11kV
485 rpm-1750 rpm
Cast iron, bronze, stainless steel (316, 904L, Duplex, Super Duplex)
Installation in wet wells (quick coupling device), installation in dry pits and transportable installation

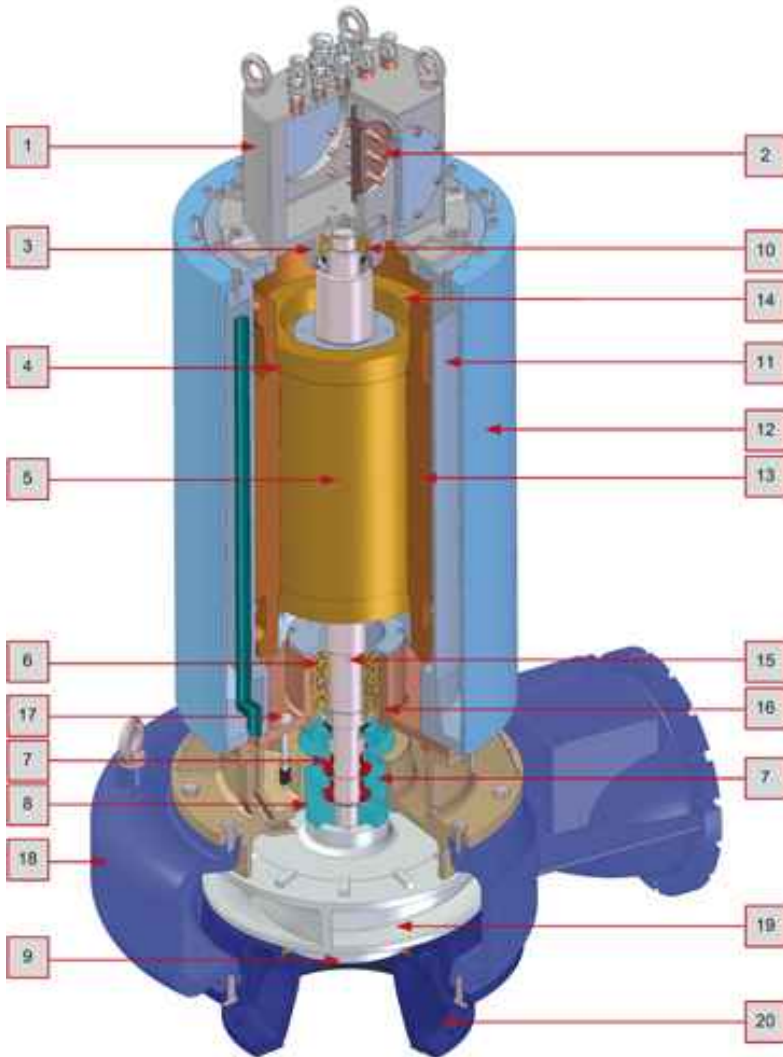
www.ingeteam.com
indarmh@indar.ingeteam.com

Indar
An *Ingeteam* brand



Installation options	Range of materials
<ul style="list-style-type: none"> · Installation in wet wells, with quick coupling device. · Dry pit installation. · Transportable installation. 	Iron Bronze Stainless steel: 304 316 904L Duplex Super Duplex
Upon the characteristics of pumping fluid, the BF series are built in various materials which make the pump highly-resistant against abrasion and corrosion. All units are equipped with high-quality mechanical seals to ensure the electrical motor to be protected.	

The BF series is a robust, safe, flexible solution with a modular design, enabling it to cover a wide range of flows and heads



- 1 Cable outlet lid
- 2 Terminal tablet
- 3 Upper bearing temperature sensor
- 4 Windings thermal protection
- 5 Rotor
- 6 Bearings
- 7 Mechanical Seals
- 8 Oil chamber
- 9 Wearing ring
- 10 Bearings
- 11 Stator casing
- 12 Cooling jacket
- 13 Stator
- 14 Coil heads
- 15 Common shaft for impeller and rotor
- 16 Lower bearing temperature sensor
- 17 Level sensor
- 18 Pump body
- 19 Impeller
- 20 Suction nozzle